

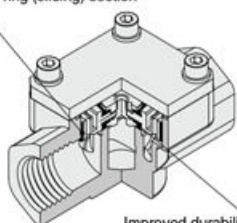
5.0 MPa Check Valve

Series VCHC40

How to Order



Using NSF-H1 certified grease for the guide ring (sliding) section



Improved durability in high-pressure environments by using a polyurethane elastomer poppet

Symbol



VCHC40 - 06 G

• Thread type
(Conforming to ISO1179-1 on the pneumatic/hydraulic G thread)

• Port size

06	3/4
10	1

Specifications

Model	VCHC40	
Operating pressure	0.05 to 5.0 MPa	
Cracking pressure	0.05 MPa	
Orifice diameter	ø16	
Flow characteristics	C value (Effective area)	28 dm ³ /(s·bar) (140 mm ²)
	b	0.15
	Cv	7.4
Fluid	Air, Inert gas	
Fluid temperature	5 to 80°C	
Ambient temperature	5 to 80°C	
Body material	Brass	
Seal material	Polyurethane elastomer	
Port size	G3/4, 1 (Conforming to ISO1179-1 on the pneumatic/hydraulic G thread)	
Mounting orientation	Unrestricted	
Weight	1.02 kg	

AS

TMH

ASD

AS

AS-FE
KE

AS-FG

AS-FP

AS-FM

AS-D
AS-T

ASP

ASN

AQ

ASV

AK

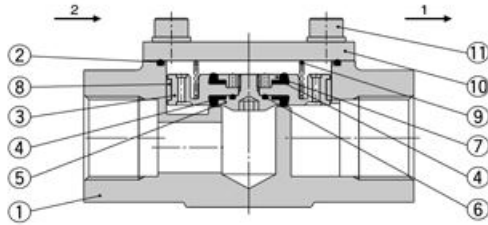
VCHC

ASS

ASR
ASQ

Series VCHC40

Construction

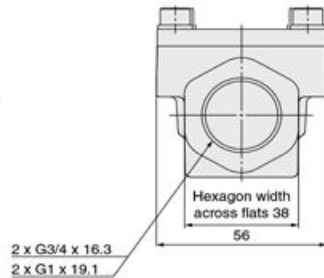
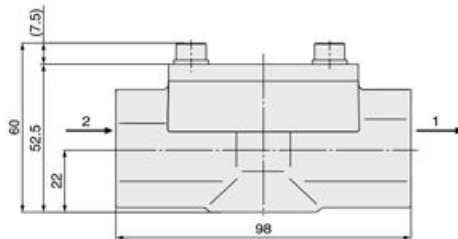
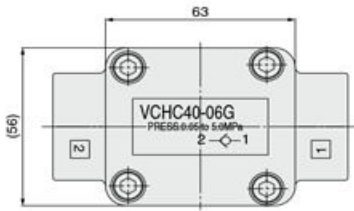


Component Parts

No.	Description	Material
1	Body	Brass
2	O-ring	NBR
3	Piston	Aluminum + Hard anodized
4	Poppet	Polyurethane elastomer
5	Set screw	Stainless steel
6	O-ring	NBR
7	Nut	Stainless steel
8	Guide ring	Resin
9	Spring	Stainless steel
10	Plate	Steel + Electroless nickel plated
11	Hexagon socket head cap screw (with SW)	Carbon steel

Dimensions

VCHC40





Series VCHC40 Specific Product Precautions

Be sure to read this before handling.
Refer to front matter 56 for Safety Instructions.

Selection

Warning

1. Fluid

Corrosive gas

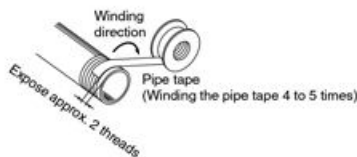
Do not use corrosive gas because it may cause corrosive stress cracks and other problems.

Piping

Caution

1. Wrapping of pipe tape

Pipe tape is not necessary since this product uses a pneumatic and hydraulic purpose G thread which conforms to ISO 1179-1. When an R (taper) thread is used, leave 1 to 2 threads at the tip exposed before winding the piping thread around it 4 to 5 times.



Connecting a R thread

2. Always tighten threads with the proper tightening torque.

When attaching fittings to valves, tighten with the proper tightening torque shown below.

Tightening Torque for Piping

Connection threads	Proper tightening torque N · m
G, Rc 3/4	28 to 30
G, Rc 1	36 to 38

Operating Environment

Warning

1. Do not use in an explosive atmosphere.
2. In locations where there is contact with water, oil or spatter from soldering, etc., implement suitable protective measures.

Maintenance

Caution

1. Storage

In the case of long term storage after use with water, etc., first thoroughly remove all moisture to prevent rust and deterioration of rubber materials.

AS

TMH

ASD

AS

AS-FE
KE

AS-FG

AS-FP

AS-FM

AS-D
AS-T

ASP

ASN

AQ

ASV

AK

VCHC

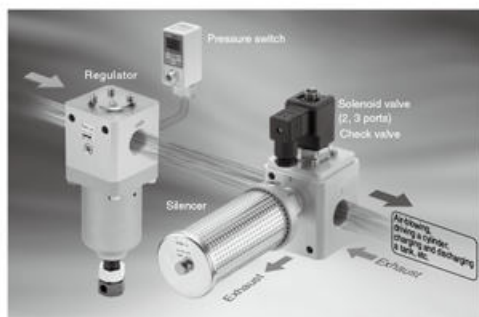
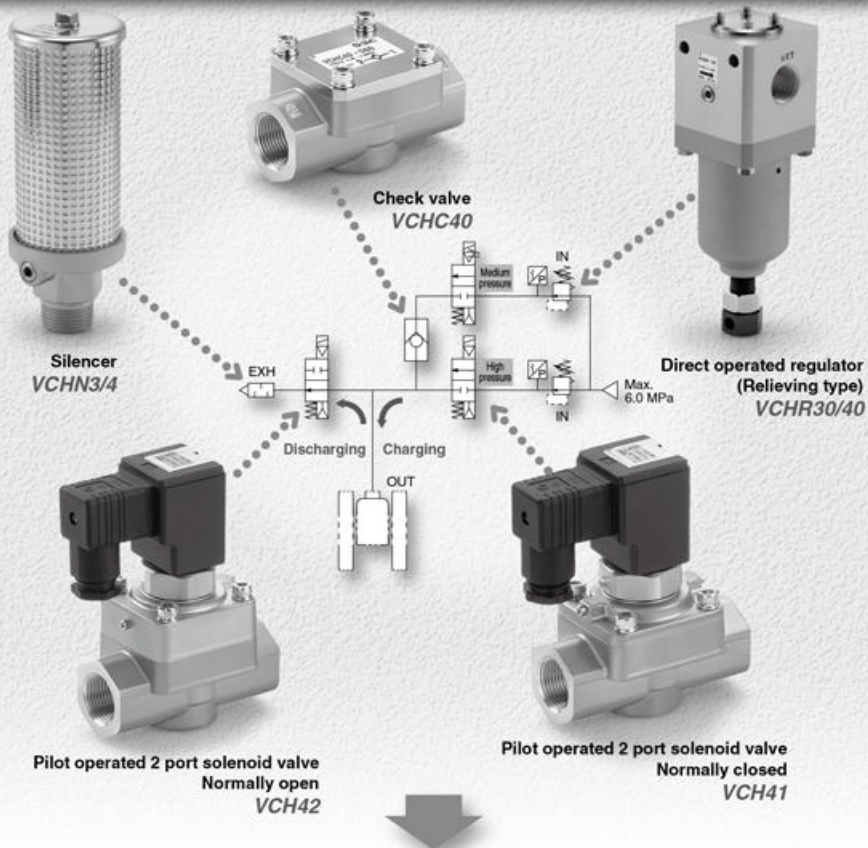
ASS

ASR
ASQ

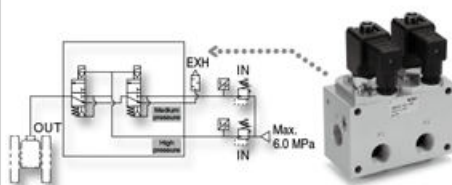
5.0 MPa

Pneumatic

Applications included air-blowing, charging fluid into a vessel, or discharging (Blow-molding equipment, etc.)



Made to Order/Manifold Unit

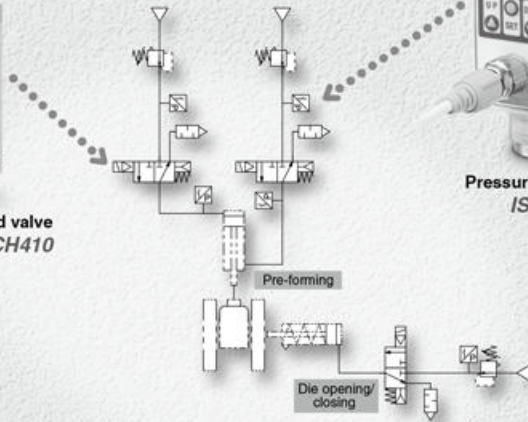


Equipment Variation






Example of driving a cylinder




Pilot operated 3 port solenoid valve
VCH410





Pressure switch
ISE75(H)

Description	Features	Maximum operating pressure (MPa)	Series	Port size					Page
				1/4	1/2	3/4	1	1 1/4	
 Pilot operated 2 port solenoid valve	Service life: 10 million cycles Adopting a polyurethane elastomer poppet in a valve seat. Improved durability under a high pressure environment.	5.0	VCH41(N.C.)			●	●		Best Pneumatics No.7
			VCH42(N.O.)			●	●		
 Check valve		5.0	VCHC40			●	●		Best Pneumatics No.7
 Pilot operated 3 port solenoid valve			VCH410			●	●	●	Best Pneumatics No.7
 Direct operated regulator (Relieving type)		Inlet pressure 6.0 Set pressure 0.5 to 5.0	VCHR30			●	●		Best Pneumatics No.5
			VCHR40				●	●	
 Silencer	Noise reduction 35 dB(A) (At supply pressure 4.0 MPa, back pressure 2.0 MPa) Clogging-reduction with double-layer construction	5.0 (Relief valve release pressure: 1.8 MPa)	VCHN3			●	●		P.680
			VCHN4				●	●	

Related Equipment

 Pressure switch	2-color display Metal body (Aluminum die-cast)	10.0 15.0	ISE75(H)	●						P.816
--	--	--------------	----------	---	--	--	--	--	--	-------

Made to Order

- 6.0 MPa pilot operated regulator (Air operated type)  Best Pneumatics No.7
- 22.0 MPa 2 port air operated valve  Best Pneumatics No.7



HINDUSTAN HYDRAULICS & PNEUMATICS
Chennai - 600 001.



V. Anandha Krishnan - 98409 21885
044 - 2534 3066, 5625, 5587



hhp@hindustanhydraulic.in | www.hindustanhydraulic.com

AS
TMH
ASD
AS
AS-FE
KE
AS-FG
AS-FP
AS-FM
AS-D
AS-T
ASP
ASN
AQ
ASV
AK
VCHC
ASS
ASR
ASQ